



Turnagain Pass

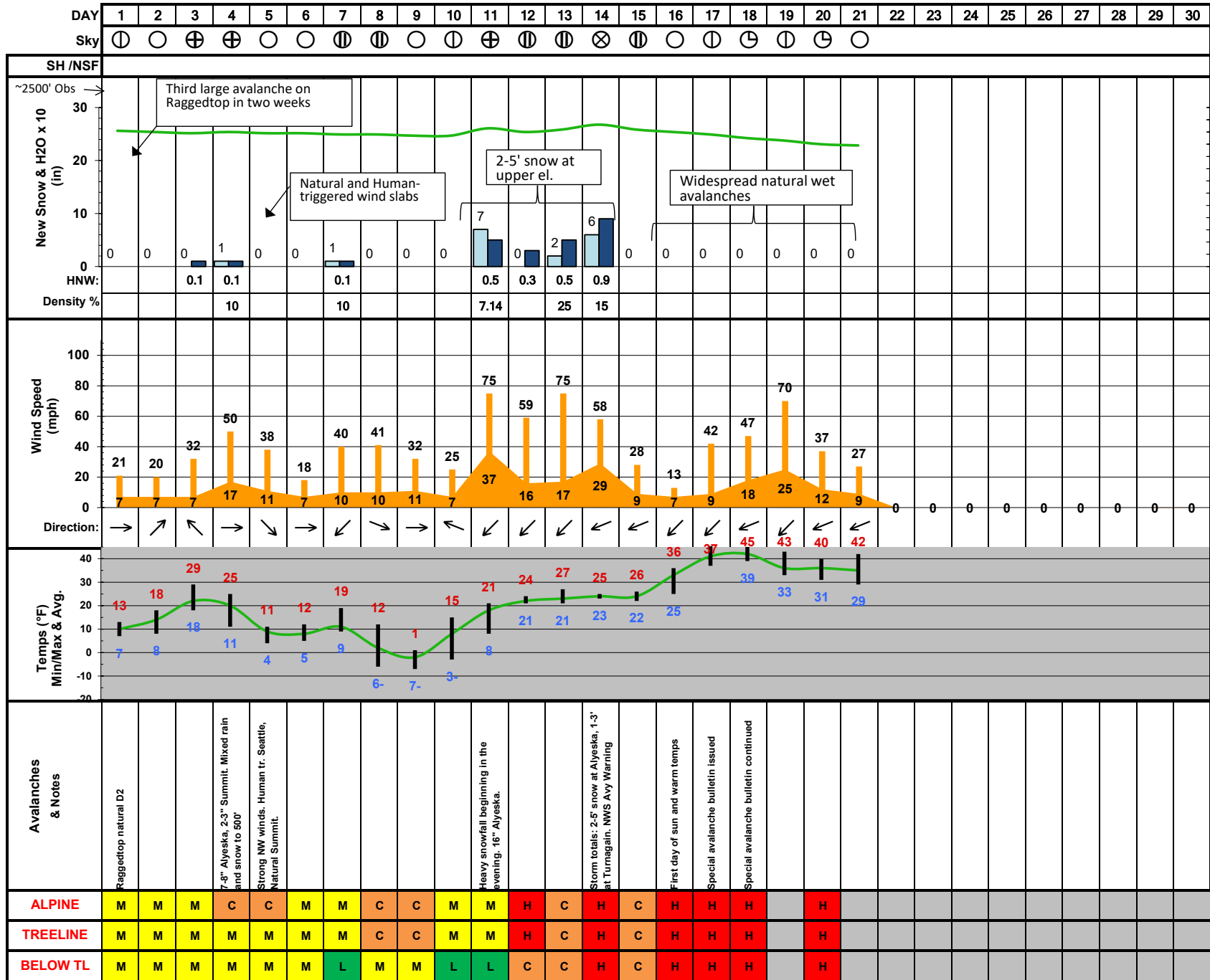
**Center Ridge
Snow (1880')**

**Sunburst
Temp/Wind (3812')**

6am to 6am

Month: **APRIL**

Season: **2020/21**



MONTHLY SNOW: 17.0

MONTHLY H2O: 2.5

SEASONAL SNOW: 383.5

SEASON H2O: 41.5

*Key for precipitation graph: Light blue bars = Height of New Snow. Dark blue bars = Height of New Water X 10. (For example, when bars are of equal height, snow density is 10%.)